

Component tests – rail sector

Since our constitution in 1901 the **Technische Versuchs- & Forschungsanstalt** has been working in the field of component testing for the rail sector. Our services range from track substructures to rails, wheels, machine components all the way to overhead lines, their connections and guying.

Our services:

Component tests for

- Railway fastening systems according to EN 13481 and EN 13146
- Concrete sleepers and bearers according to EN 13230
- Hollow sleepers and bearers according to EN 16431
- Aluminothermic welding of rails according to EN 14730
- Flash butt welding of rails according to EN 14587
- Insulated rail joints, clamping elements according to technical delivery conditions
- Pull-out tests for fastening components according to EN 13481
- Intermediate plates, sub ballast mats (spring characteristics) according to technical delivery conditions
- Catenary wire components (contact wires, anchor cables, connecting elements) according to technical delivery conditions

Individual tests and services

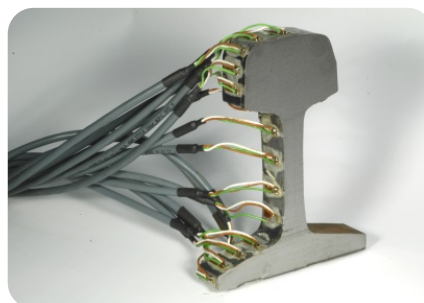
- Load tests (up to 2500 kN), fatigue tests, spring characteristics
- Residual stress analysis (cutting free method and hole drilling method)
- Monitoring and in-situ measurement of vehicles and rails in operation
- Corrosion tests according to different standards
- Damage analysis of components according to VDI 3822
- Chemical analysis and metallography
- Support in product development processes
- Special applications on request



Your benefit:

- High quality execution of the tests
- Punctual delivery
- Implementation of specific customer requirements and solutions

Please contact us for a **quote**. For further information on our services please visit our homepage at www.tvfa.at.



Contact

DI Dr. techn. Gernot Wagner
T +43 (0) 664-60588 6416
gernot.wagner@tvfa.at

Technische Versuchs- und
Forschungsanstalt GmbH
Gutheil-Schoder-Gasse 17, 1230 Vienna